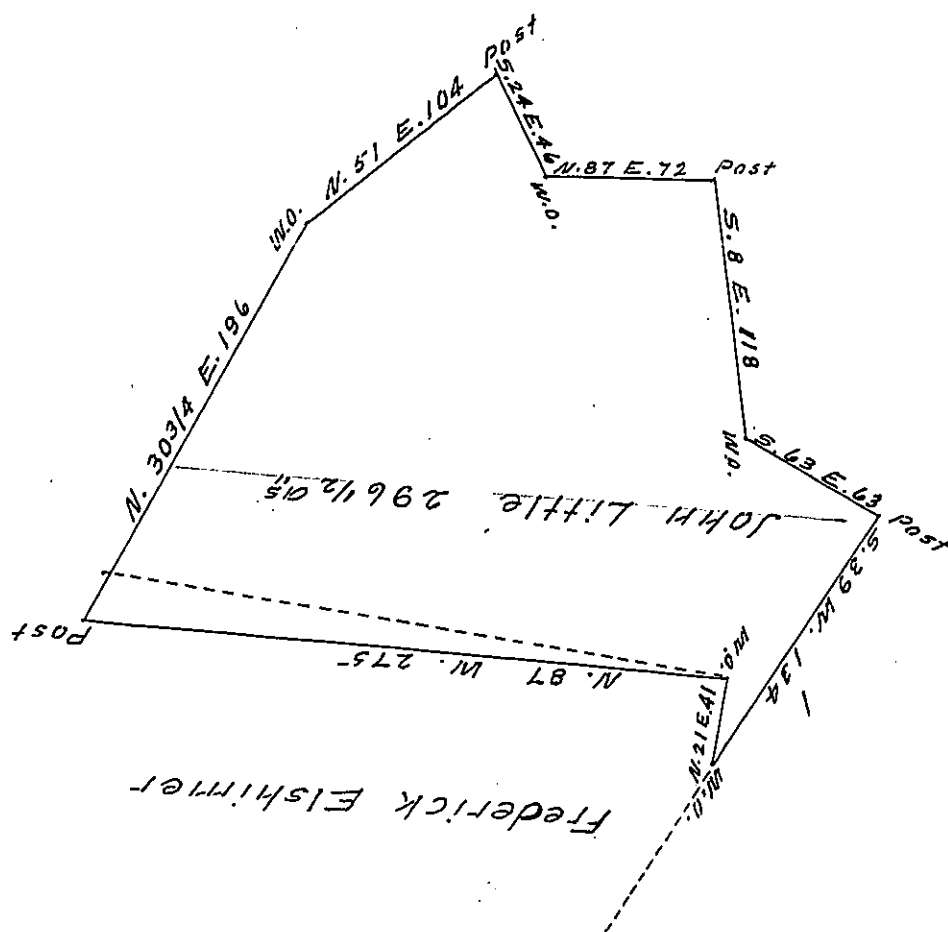


FORM NO 1.



A draft of a tract of land situate on Lick Run in Napier township Bedford County containing two hundred and ninety six acres and eighty perches and allowance of six per cent for roads & so surveyed for John Little the 26th day of November 1817 on warrant dated the 20th day of August 1765.

N.B. The dotted line represents part of a draft of a tract of land surveyed for Frederick Elshimer on warrant dated the 10th day of August 1765. This tract interferes sixteen acres and thirty three perches with the John Little tract. Frederick Elshimer conveyed to John Baynton, Samuel Wharton & George Morgan ^{they} to Richard Neave Sen^r and Richard Neave J^r who conveyed to Robert McKnight whose heirs now own the land
To Gabriel Heister, Esq^r S. B. James O'Connor D. S.

IN TESTIMONY that the above is a copy of the original remaining on file in the Department of Internal Affairs of Pennsylvania, made conformably to an Act of Assembly approved the 16th day of February, 1833, I have hereunto set my Hand and caused the Seal of said Department to be affixed at Harrisburg, this first day of December 1908

Wm. H. Howard
Secretary of Internal Affairs.